

Investor Fact Sheet for the First Half of Fiscal 2005

(1 April 2004 through 30 September 2004)

Consolidated Balance Sheets

JANOME SEWING MACHINE CO., LTD. AND ITS CONSOLIDATED SUBSIDIARIES

As of 30 September and 31 March 2004

Millions of yen

ACCOUNT	30 September 2004	31 March 2004	Increase (Decrease)	30 September 2003
[ASSETS]				
Current assets				
Cash and cash equivalents	3,203	4,365	(1,162)	5,214
Accounts and notes receivable	7,830	7,645	185	7,193
Marketable securities	1,427	533	893	473
Inventories	8,343	6,884	1,458	7,882
Other current assets	1,628	2,664	(1,036)	1,686
Allowance for doubtful accounts	(183)	(192)	9	(185)
Total current assets	22,250	21,901	348	22,265
Fixed assets				
Tangible fixed assets				
Buildings and structures	4,709	4,802	(93)	4,844
Land	16,514	16,385	129	16,386
Other tangible fixed assets	2,258	2,109	149	2,235
Total tangible fixed assets	23,483	23,297	185	23,466
Intangible fixed assets				
	624	617	7	596
Investments and other assets				
Investment securities	6,343	8,492	(2,148)	8,171
Uncollectable receivable	30,000	30,000	—	30,000
Deferred tax assets	5,622	5,125	496	5,148
Other investments and assets	1,329	1,365	(35)	1,349
Allowance for doubtful accounts	(23,120)	(23,120)	(0)	(21,156)
Total investments and other assets	20,174	21,862	(1,688)	23,513
Total fixed assets	44,281	45,777	(1,495)	47,576
TOTAL ASSETS	66,532	67,678	(1,146)	69,841
[LIABILITIES]				
Current liabilities				
Notes and accounts payable	4,241	4,151	90	4,670
Short-term borrowings	22,074	30,650	(8,576)	33,766
Income taxes payable	519	495	24	505
Allowance for employees' bonuses	754	615	139	749
Other current liabilities	2,605	2,589	16	2,722
Total current liabilities	30,196	38,502	(8,305)	42,414
Fixed liabilities				
Bonds	1,000	—	1,000	—
Long-term borrowings	10,021	3,786	6,234	3,920
Deferred tax liabilities	3,933	3,933	—	3,933
Liability for retirement payments	4,133	4,096	36	3,933
Other fixed liabilities	803	800	3	782
Total fixed liabilities	19,891	12,616	7,274	12,569
TOTAL LIABILITIES	50,087	51,118	(1,031)	54,983
MINORITY INTEREST SHARE	506	528	(22)	488
[STOCKHOLDERS' EQUITY]				
Common stock	7,623	7,623	—	7,623
Capital surplus	0	1,694	(1,694)	1,694
Retained earnings	4,422	2,208	2,213	972
Difference from revaluation of land	5,733	5,733	—	5,733
Difference from revaluation of investment securities	(466)	270	(737)	(286)
Foreign currency translation adjustments	(1,371)	(1,497)	125	(1,366)
Treasury stock, at cost	(2)	(1)	(0)	(1)
TOTAL STOCKHOLDERS' EQUITY	15,938	16,030	(92)	14,369
TOTAL OF LIABILITIES, MINORITY INTEREST SHARE AND STOCKHOLDERS' EQUITY	66,532	67,678	(1,146)	69,841

Note: Amounts less than one million yen have been rounded down.

Consolidated Statements of Income

JANOME SEWING MACHINE CO., LTD. AND ITS CONSOLIDATED SUBSIDIARIES

For the periods of 1 April - 30 September 2004, and 1 April - 30 September 2003

Millions of yen

ACCOUNT	2004 1 Apr - 30 Sep	2003 1 Apr - 30 Sep	Increase (Decrease)	1 April 2003 - 31 March 2004
Net sales	22,990	22,761	229	48,804
Cost of sales	10,785	10,492	292	22,543
Gross profit	12,204	12,268	(63)	26,260
Selling, general and administrative expenses	10,696	10,392	304	21,614
Operating income	1,507	1,875	(367)	4,646
Other income				
Interest income	15	20	(4)	40
Dividend income	12	113	(101)	113
Foreign exchange profit	124	--	124	--
Minority interest in net profit of subsidiary	--	9	(9)	--
Miscellaneous	68	70	(1)	192
Total other income	221	213	7	346
Other expenses				
Interest expense	380	441	(61)	861
Foreign exchange loss	--	112	(112)	229
Minority interest in net loss of subsidiary	0	--	0	10
Miscellaneous	77	61	16	66
Total other expenses	457	615	(157)	1,169
Ordinary profit	1,271	1,473	(202)	3,823
Extraordinary profit				
Gain on sales of fixed assets	102	11	91	42
Gain on sale of investment securities	--	5	(5)	145
Profit distribution from liquidation of subsidiary	--	--	--	986
Total extraordinary profit	102	16	86	1,174
Extraordinary loss				
Loss on revaluation of inventories	36	43	(6)	118
Loss on sales or depreciation of fixed assets	24	42	(18)	69
Loss on sales of investment securities	--	--	--	118
Accrual of allowance for bad debts	--	--	--	2,014
Other extraordinary loss	1	13	(12)	13
Total extraordinary loss	62	98	(36)	2,333
Income before income taxes	1,311	1,390	(79)	2,664
Income tax, inhabitant tax and business tax	678	613	64	1,016
Income tax adjustment	78	(43)	122	(460)
Minority interest	49	72	(22)	131
Net income	504	747	(243)	1,975

Exchange rate	2004 1 Apr - 30 Sep	2003 1 Apr - 30 Sep	Increase (Decrease)	1 April 2003 - 31 March 2004
Currency translated at:				
1 US\$ =	¥109.86	¥118.05	(¥8.19)	¥113.07

Note: Amounts less than one million yen have been rounded down.

Consolidated Statements of Cash Flows

JANOME SEWING MACHINE CO., LTD. AND ITS CONSOLIDATED SUBSIDIARIES

For the periods of 1 April - 30 September 2004, and 1 April - 30 September 2003

Millions of yen

ACCOUNT	2004	2003	1 April 2003 - 31 March 2004
	1 Apr - 30 Sep	1 Apr - 30 Sep	
Net cash provided by (used in) operating activities	683	1,302	3,602
Net cash provided by (used in) investing activities	(453)	(282)	(331)
Net cash provided by (used in) financing activities	(1,657)	(2,508)	(5,583)
Effect of exchange rate changes on cash and cash equivalent	(6)	(1)	31
Increase/decrease in cash and cash equivalents	(1,434)	(1,490)	(2,281)
Cash and cash equivalents, at beginning of period	4,283	6,341	6,341
Increase in cash and cash equivalents from affiliates	93	222	222
Cash and cash equivalents, at end of period	2,942	5,074	4,283

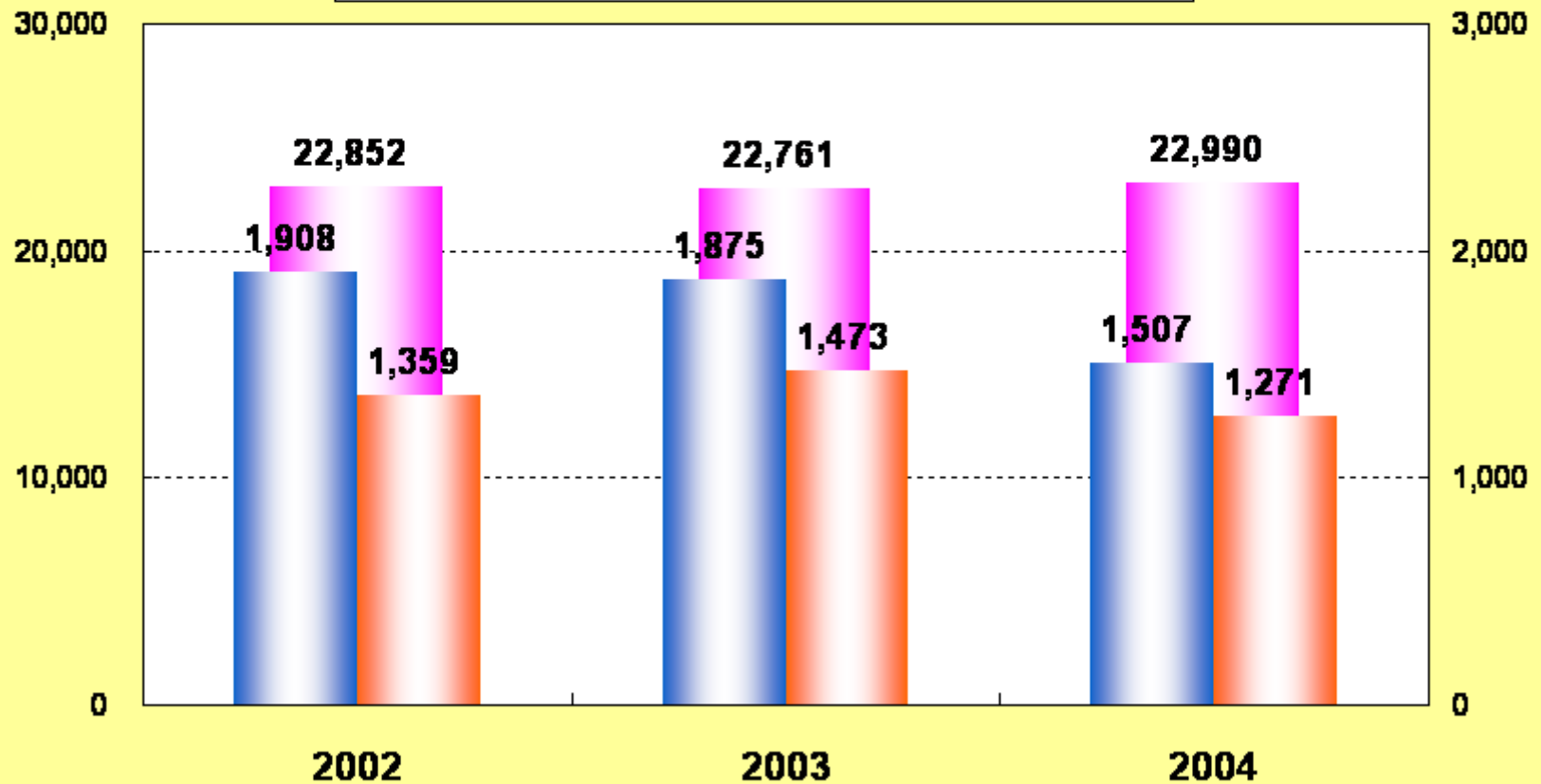
Note: Amounts less than one million yen have been rounded down.

Net Sales - Operating Income - Ordinary Income for the periods of April 1 - September 30

Net Sales
(Millions of yen)

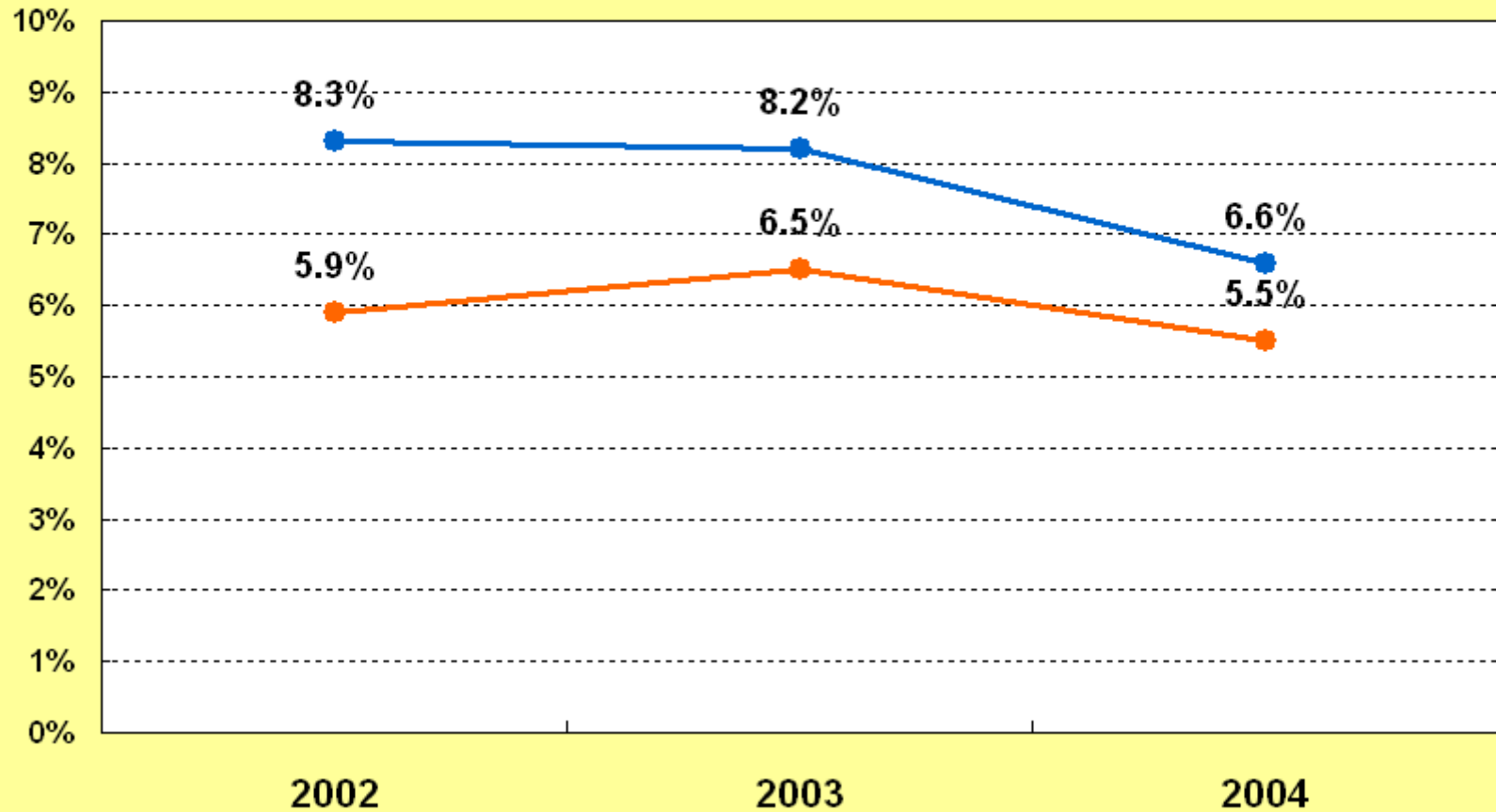
■ Net Sales
 ■ Operating Income
 ■ Ordinary Income

Operating Income -
Ordinary Income
(Millions of yen)



Operating Income Ratio - Ordinary Income Ratio for the periods of April 1 - September 30

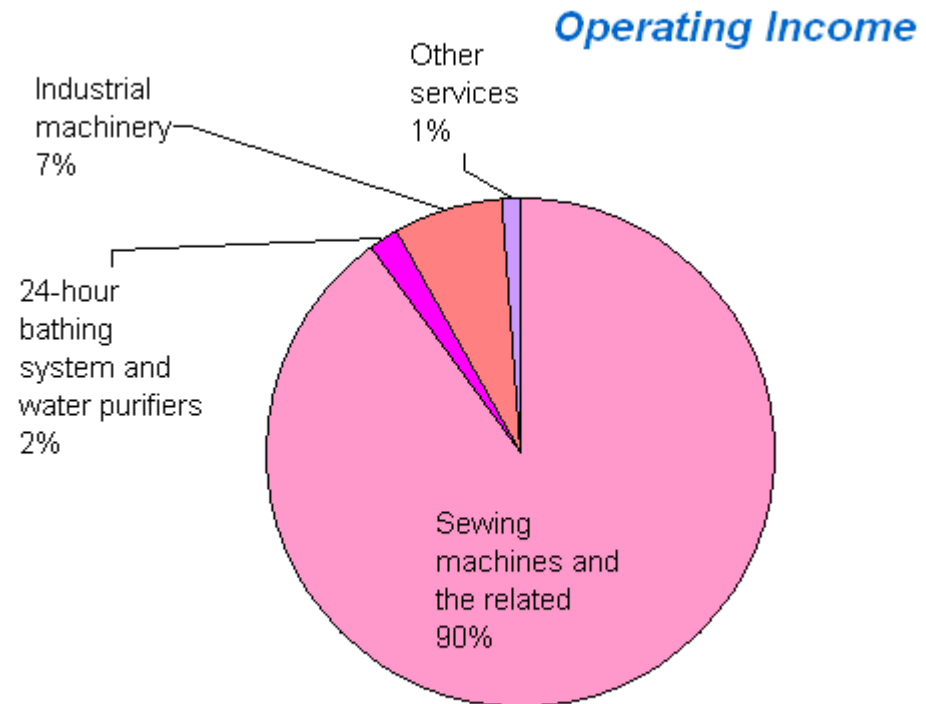
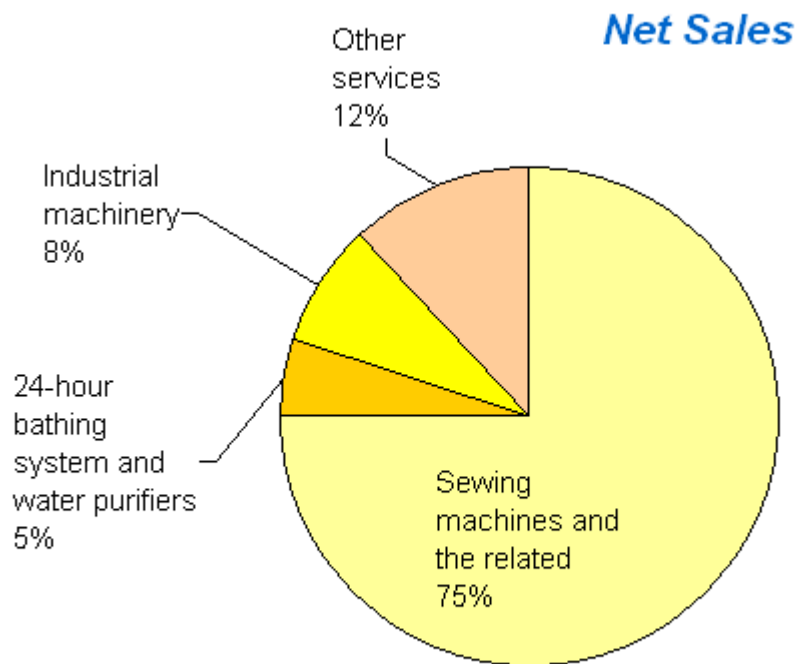
—●— Operating Income Ratio —●— Ordinary Income Ratio



Consolidated Segment Information

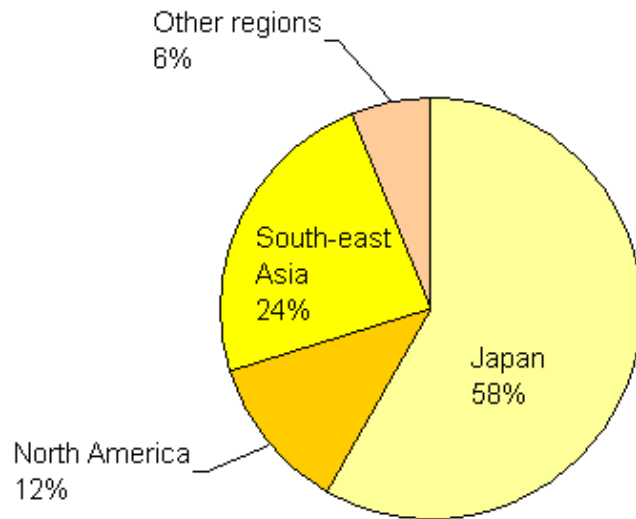
(for the period of 1 April – 30 September 2004)

Operation by Business Segment

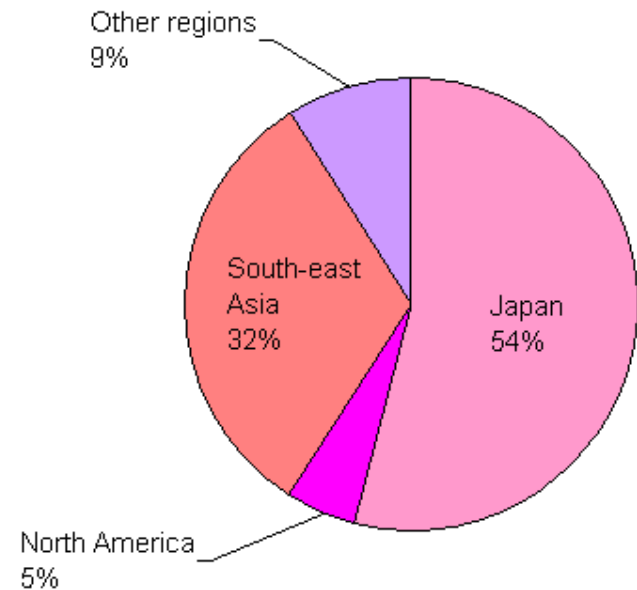


Operation by Region

Net Sales



Operating Income



Note: Figures in % of net sales by region include inter-segment sales.

Share Information

(As of 30 September 2004)

Common Stock

Number of authorized shares	360,000,000
Number of shares in issue	152,460,000
Number of shareholders	12,254

Shareholders' classification (% vs. total number of shares)

