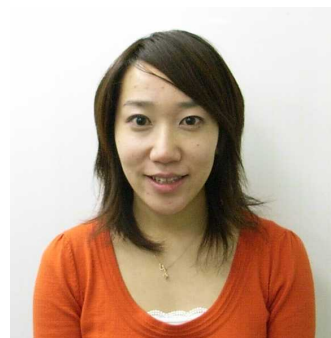


Embroidered Potpourri Sachet



This project was created by Waka Yasuoka, Janome Tokyo.

This elegant little sachet is the perfect size for adding just a bit of potpourri. You won't believe how easy it is to make using your embroidery machine! This project introduces the editing functions of the MC200E embroidery-only machine but can be made on any Janome embroidery machine, and also reviews how to operate the machine using embroidery data created with DigitizerPro.

Functions used

- Saving embroidery data
- Loading built-in designs
- Editing page (relocating designs, magnifying images, resizing designs)
- Skipping designs

Software used

DigitizerPro Ver. 2.0K

Required time

90 minutes

Materials

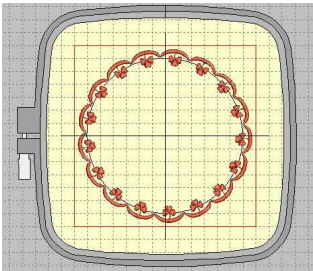
Organza	25 x 25cm (10 x 10")	2 pieces
Water-soluble stabilizer	25 x 25cm (10 x 10")	4 pieces

JANOME embroidery thread (001 or 253)
JANOME embroidery bobbin thread (white)

1 spool
1 bobbin

Instructions

1. Use DigitizerPro to make the border portion of the embroidery design.

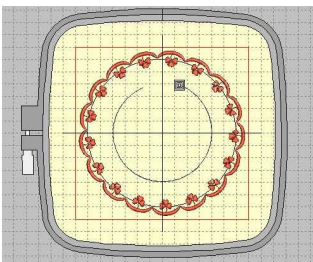


▶ Use the motif running stitch to draw a circle.

●Tip●

Select a design that will be suitable for cutting out after embroidering.

Draw a circle for sewing up fabrics leaving a opening for putting potpourri in.

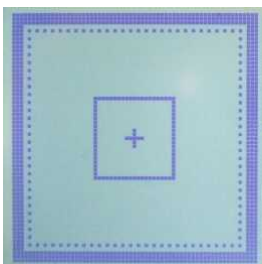


●Tip●

Change thread color to blue to add a color stop.
(Any color is ok except red.)

▶ Save to USB memory.

2. Combine built-in designs and the embroidery data created with DigitizerPro.



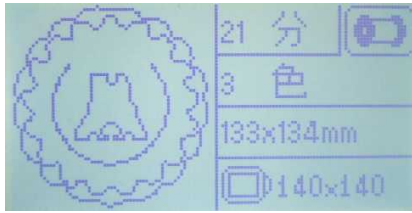
▶ Call up the embroidery data created with DigitizerPro.

▶ Select a built-in design (No. 46) to be used as a single motif and arrange as desired.
Enlarge or reduce the size of the design as desired.

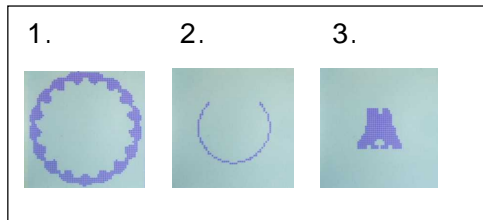
●Tip●

Press the zoom key and make sure the designs align properly.

3. Embroider



- ▶ Hoop one layer of organza together with two layers of water-soluble stabilizer. Stitch only the border design and remove the fabric from the hoop after finishing.



The machine will display the following embroidery sequence

1. Border design
2. Circle for pouch
3. Built-in design



- ▶ Stitch border and built-in designs onto the other piece of fabric, skipping the circle for the pouch.

While embroidering the second piece, trim away the fabric and stabilizer of the first along the outer edge of the border design and cut out only the stabilizer along the inner edge.



4. Embroider the two pieces together.



- ▶ Remove the hoop from the machine. Set the trimmed fabric underneath the hooped fabric with wrong sides together matching up the border designs. Pin at four points on front as shown.

●Tip●

Take care to avoid where the pouch will be sewn when pinning together the borders.



- ▶ Sew only Color 2, the pouch stitching. Remove the fabric from the hoop after finishing and trim away the rest of the fabric from the outer edge of the border design.

Dissolve the stabilizer with water and let dry.



- ▶ Turn over the fabric, add potpourri, and handstitch the opening closed.

Attach a ribbon of your choice.

You're Finished♪