

Janome Screensaver

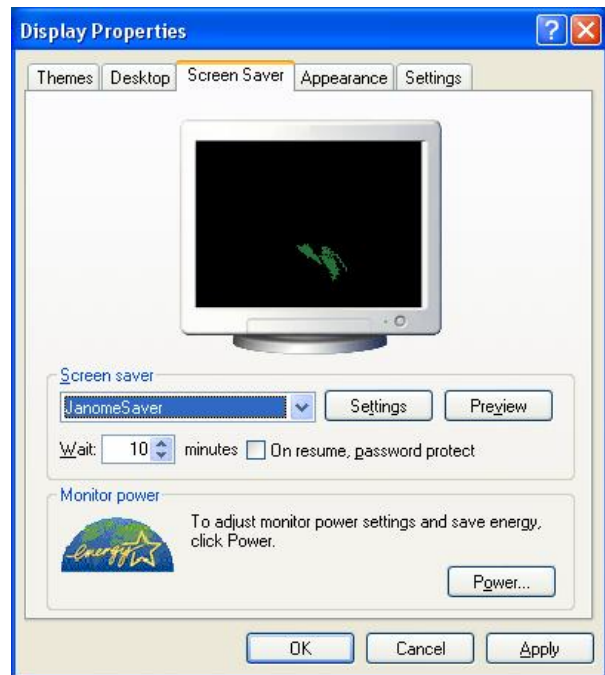
Thank you for downloading the Janome Screensaver. The Janome Screensaver is a unique function that allows your favorite *.jef format stitch designs to appear on the screen.



How to use the Janome Screensaver:

After downloading the program, the Janome Screensaver will set up itself. However, if it does not start automatically, click the right button of the mouse at any point on the desktop (screen). Click Properties at the bottom of the menu window. Highlight "Janome Saver" from pull down menu.

- **Add designs in a screensaver:**
Open the Janome Screensaver Properties window. Click the Add button of the File mode, and select your favorite *.jef format designs from your design stock in your PC.
- **Modifying designs:**
In the Option mode, you can modify any design including the line thickness, rotation and drawing speed, etc.



Note:

Only *.jef formatted embroidery stitch data can be used for the Janome screen saver. The data used for the screensaver must be stocked in a permanent hard disk drive (like the "C drive").

