

## **V1.0Q Update Installation Instructions**

### **Installation checklist**

Use the following as a checklist of all necessary steps to follow when installing and configuring your new DigitizerPro software.

**Step 1:** Read through *all* necessary installation steps carefully before getting started.

**Step 2:** When the installation is complete, you will be prompted to restart your computer.

**Step 3:** Attach your security dongle *only* when prompted.

**Step 4:** This update, DigitizerPro V1.0Q, can only be installed as an update to an existing DigitizerPro installation with a working DigitizerPro dongle. If you do not have DigitizerPro already installed, you will need an upgrade kit with an upgrade dongle in order to upgrade a previous release of the Janome digitizing software such as Digitizer 2000 or Digitizer 10000.

**Step 5:** Close *all* Windows programs but leave Windows running. Disable any virus scanning software you might be running in the background. Be aware of any messages from your firewall software (standard in Windows XP) requesting you to block access to any components of the installing software. **DO NOT** block any of the components.

**Note:** Most of your existing DigitizerPro default settings will automatically be merged with the update installation. However, you will be required to re-select your machine model in both the MemoryCraft menu and the Options for Save As > JEF.

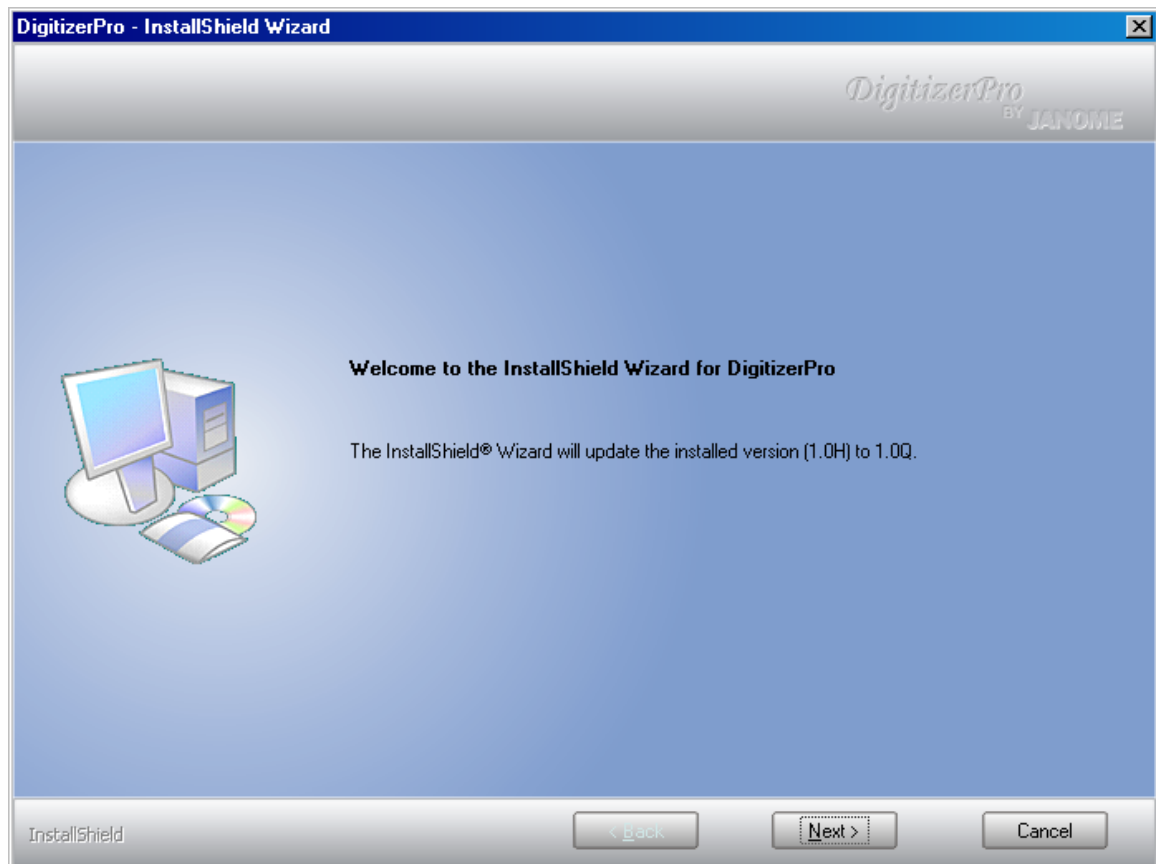
### **Installing DigitizerPro V1.0Q as an Update**

Use the procedure outlined below to install DigitizerPro software on your computer as an update to an existing DigitizerPro installation.

#### **To install a DigitizerPro Update**

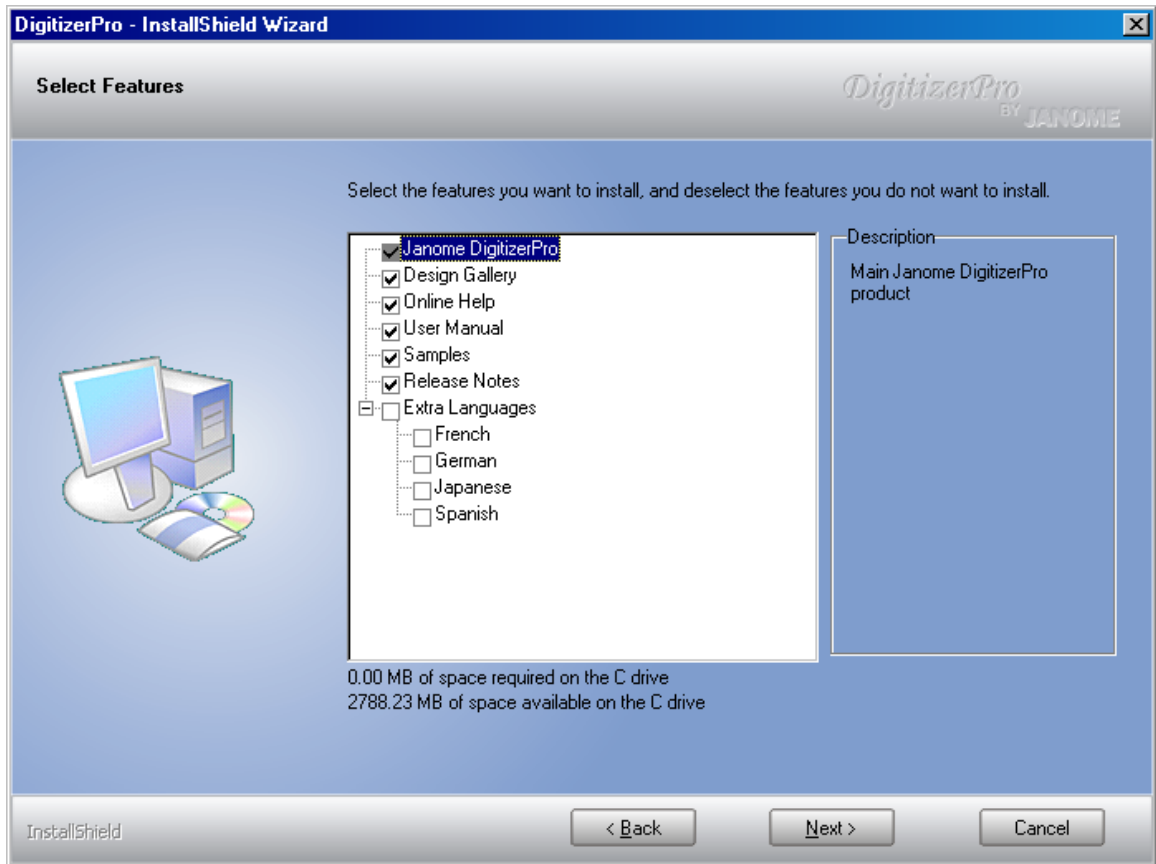
1 Insert the DigitizerPro Installation CD-ROM.

A *Welcome* screen is displayed showing your current version and the version to which you are updating.



**2** Click Next.  
The *Select Components* screen appears.

**3** Select the components to install:

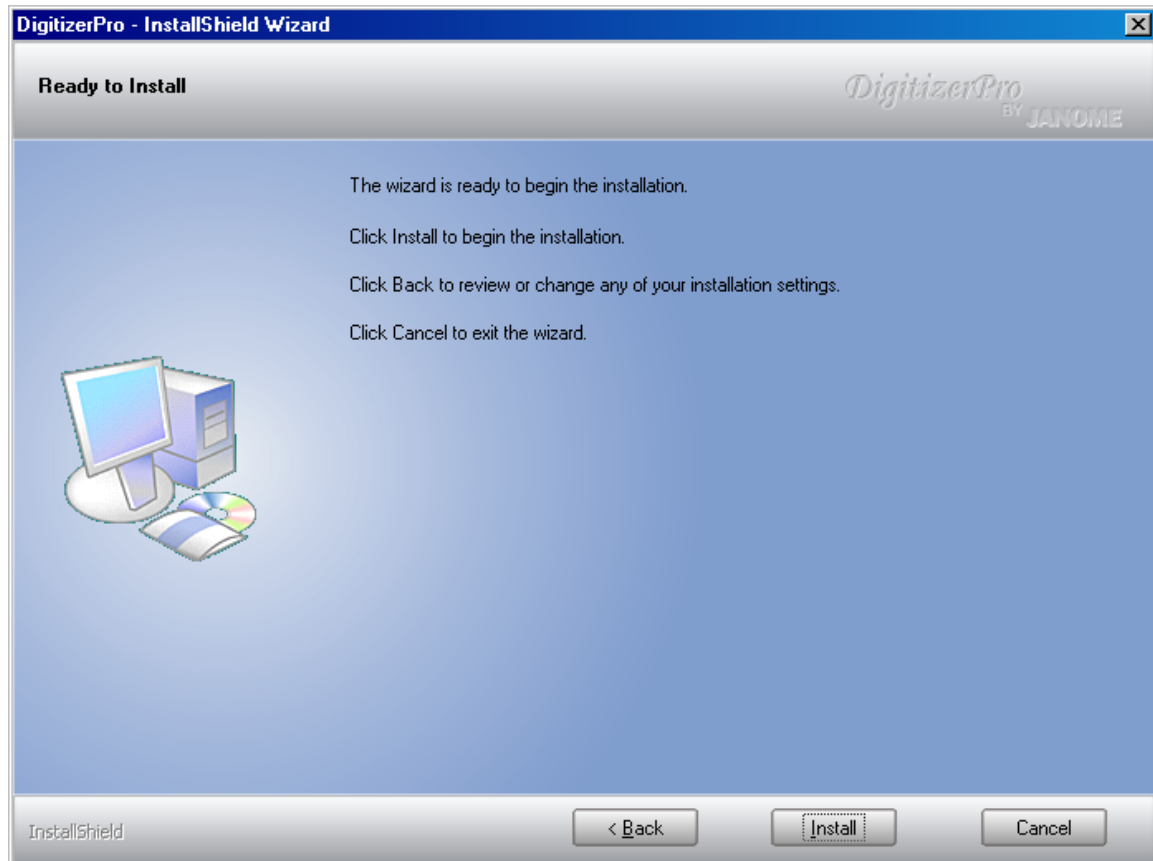


**Component Description**

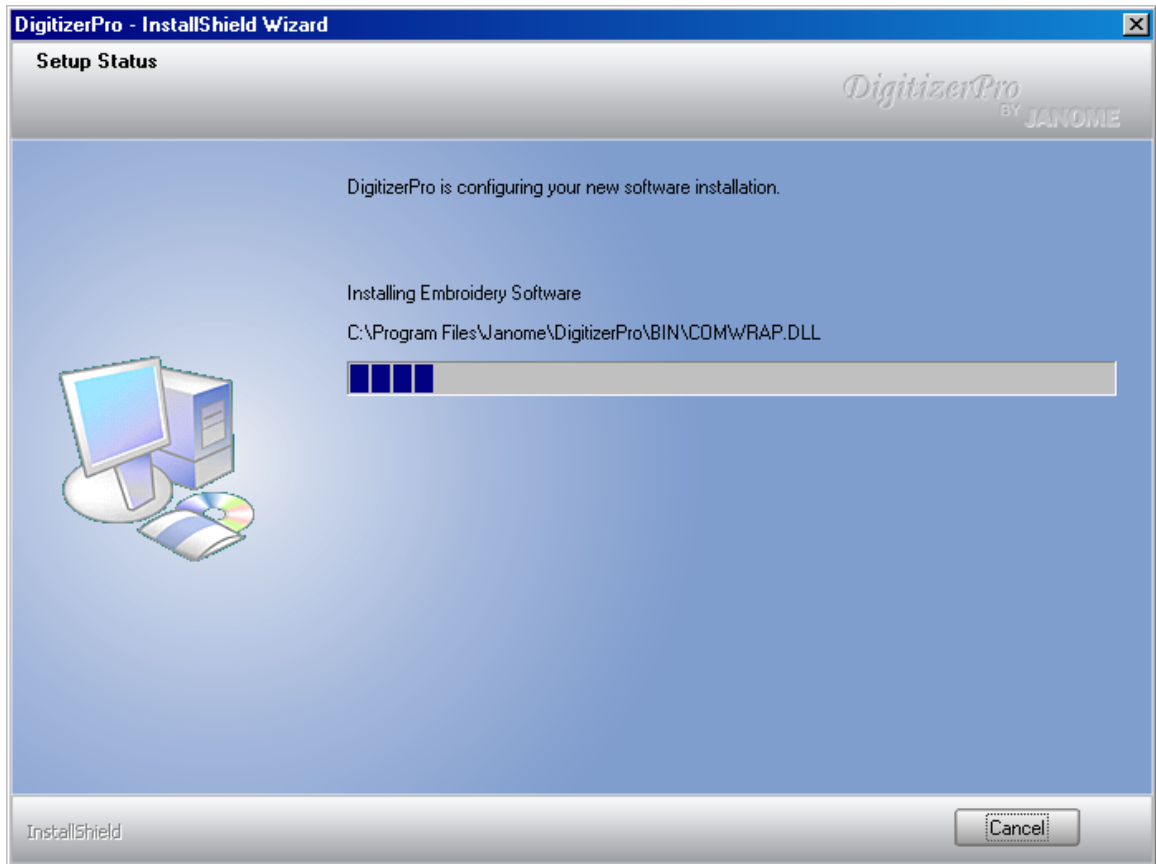
Janome DigitizerPro	Main Janome DigitizerPro product.
Design Gallery	The Design Gallery design browser application.
Online Help	On-line help – to invoke, use the F1 function key or click Help in the dialog boxes
User Manual	An electronic (online) copy of the Janome Instruction Book – accessible via the Help menu.
Samples	Sample embroidery designs and images – installed to the Embroidery Album folder on your hard drive.
Release Notes	An electronic (online) copy of the Janome Release Notes – accessible via the Help menu.
Extra Languages	In the multilingual version, extra languages are available. If online documents are available in the same language(s) you select here – e.g. Japanese – these will be installed automatically. If documents are not available in your selected languages, English

	documents will be installed. After installation, you can switch between languages using the Switch Language utility in the Program folder.
--	--

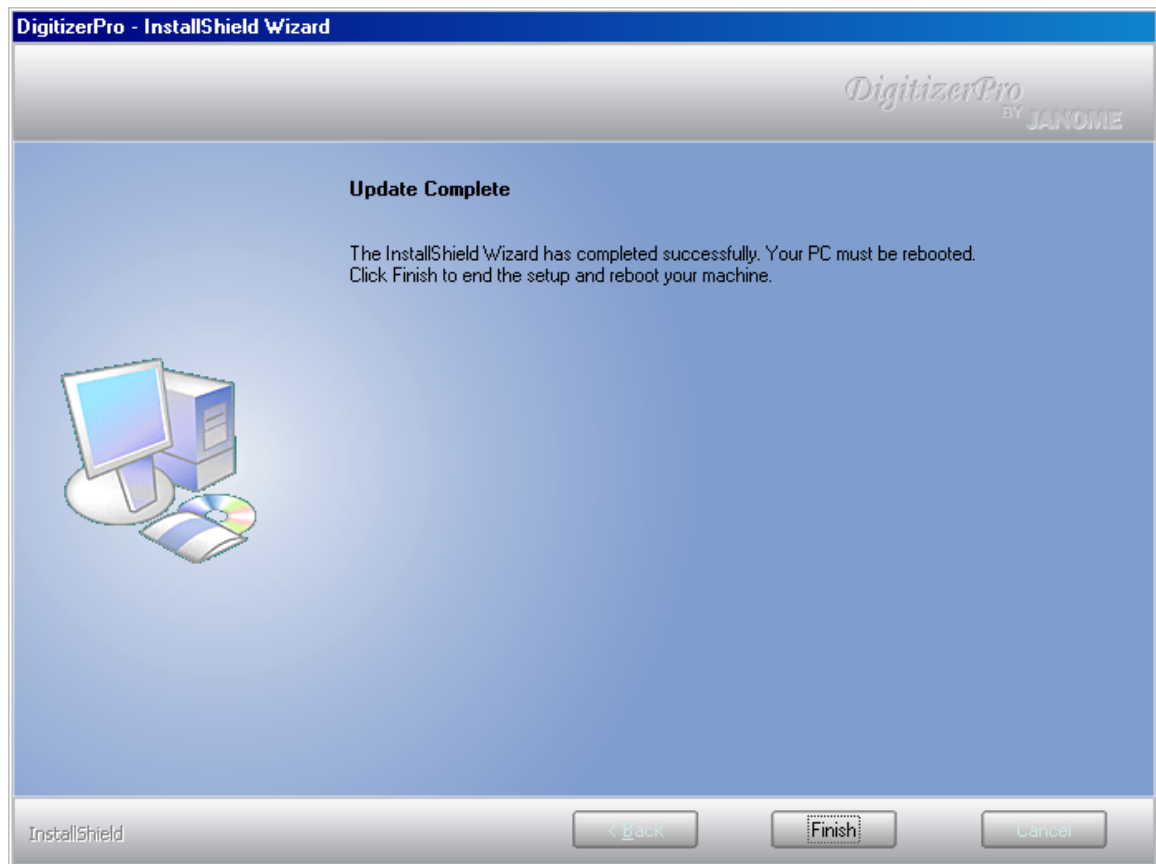
**4** Click Next.  
The *Ready to Install* screen appears.



**5** Click Install.  
You will see the installation status screen appear.



Upon successful installation of the software and any additional Windows files that need updating, the *Installation Complete* screen appears.

**6** Click Finish.

The computer will be rebooted and you will be prompted to attach the DigitizerPro dongle.

**7** Click OK.

Upon detecting the dongle, a *Setup Complete* screen appears. A Janome DigitizerPro program group is included in the Start menu. Corresponding shortcut icons are placed on the Windows Desktop.