

# OS compatibility kit installation instructions

## Please review the following before downloading: (Installation checklist)

Use the following as a checklist of all necessary steps to follow when installing and configuring the update.

1. Read through all necessary installation steps carefully before getting started.
2. Close all Windows programs but leave Windows running.

## Installing OS compatibility kit

Use the procedure outlined below to install the program on your computer.

1. Click the link for your machine on the website to download the update file.
2. When your browser prompts you for a path, navigate to your desktop and click on OK.
3. When the download is complete, minimize your browser and make sure the shortcut icon is on your desktop.

## How to extract a file or folder from a compressed folder

The following shows how to use the standard compression function of Windows 7 to extract a compressed folder.

To extract/uncompress using other operating systems (e.g.. 64-bit Vista or XP systems) , please refer to the instruction manual for that system.

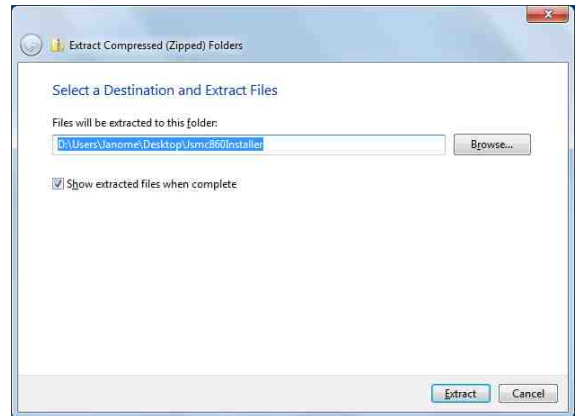
1. To extract the contents of the compressed folder, right-click the folder and click **Extract All**.



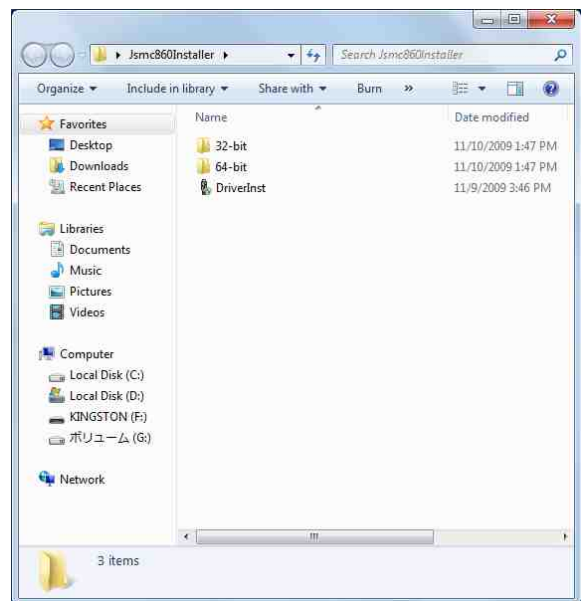
2. The **Extract Compressed (Zipped) Folders** dialog will open.

Browse to the location where you would like the folder to open, check the box next to **Show extracted files when complete** and click **Extract**.

(The default destination can be used as is, and will create the uncompressed folder in the same folder as the compressed folder.)



3. When the extraction is complete, click on the new folder to open it.



## [How to install the USB device driver in Windows 7](#)

1. Log on to your computer as Administrator or a user with administrator privileges.

End all applications before beginning.

2. Double click the Jsmc860Installer shortcut.



3. The User Account Control will display.

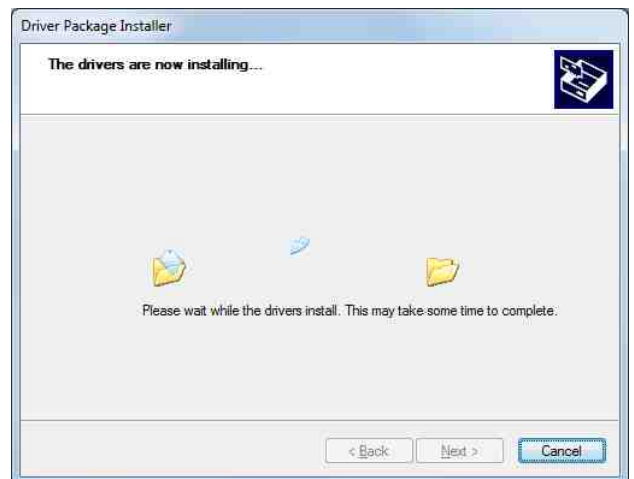
→ Click **Yes**.

4. The **Device Driver Installation Wizard** will startup.

→ Click **Next**.



5. Installation will begin.

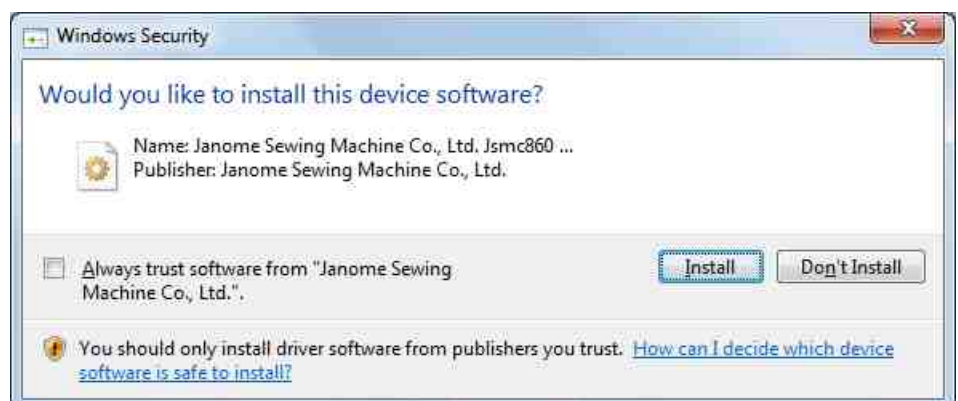


6. During installation, a **Windows Security** message will display.

→ Select **Install this driver software anyway**.



• On 64-bit systems, the following message will display.



→ Select **Install**.

7. The installation complete window will display.

→ Click **Finish** to close the dialog.



8. Connect the sewing machine to the computer with the USB cable and turn the power switch of the sewing machine ON.

9. The computer will automatically begin searching for the driver...



10. ...and install the driver.

