

MC11KTools Version 3.12 Update Installation Instructions

Please review the following before downloading (Installation checklist):

Use the following as a checklist of all necessary steps to follow when installing and configuring your new MC11KTools software.

1. Read through all necessary installation steps carefully before getting started.
2. Close all Windows programs but leave Windows running.

Installing MC11KTools Version 3.12 Update:

Use the procedure outlined below to update the MC11KTools software on your computer.

1. Click on the link of the website to download the update file.

**Click Here to Download
MC11KTools Update
Version 3.12**

2. When your browser prompts you for a path, navigate to your desktop and click on OK.

3. When the download is complete, minimize your browser.

4. Look for this icon on your desktop and double click on the icon in order to install the update to your computer.

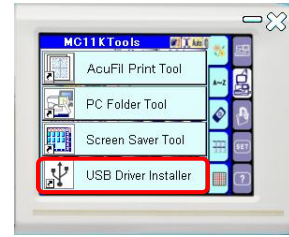


5. Follow the instructions to complete the update.

For Windows 7 (32-bit and 64-bit) and 64-bit PCs users:

1. Log on to your computer as Administrator or a user with administrator privileges.
End all applications before beginning.

2. Double click on the MC11KTools icon, launch the application and click **USB Driver Installer**.



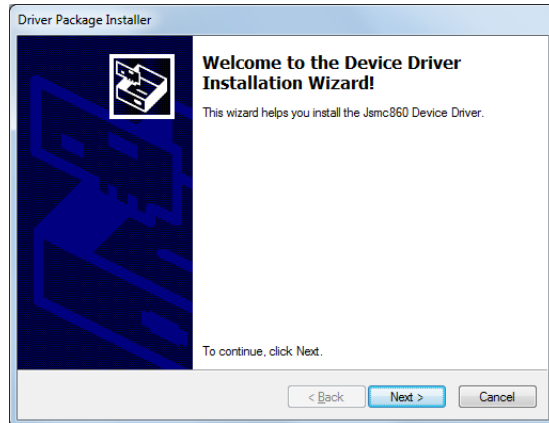
3. The User Account Control will display.
→ Click **Yes**.

4. The **Device Driver Installation Wizard** will start up.

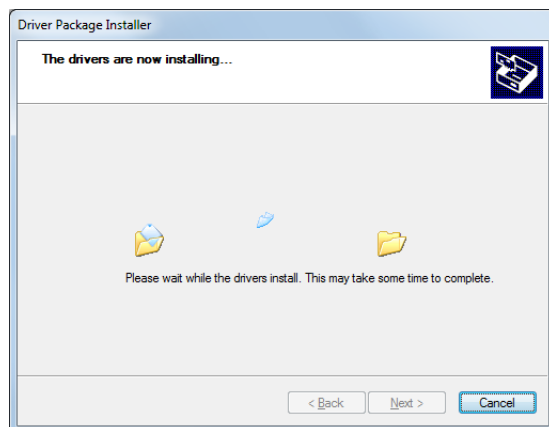
→ Click **Next**.

*If the Device Driver Installation Wizard doesn't launch, install the "OS compatibility kit for MC11000 and M770 Tools for Multi Language OS" from the following link.

http://www.janome.co.jp/e/e_download/os_compatibility_kit_pfolder.html

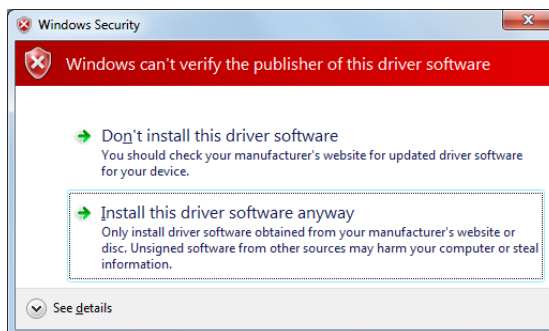


5. Installation will begin.

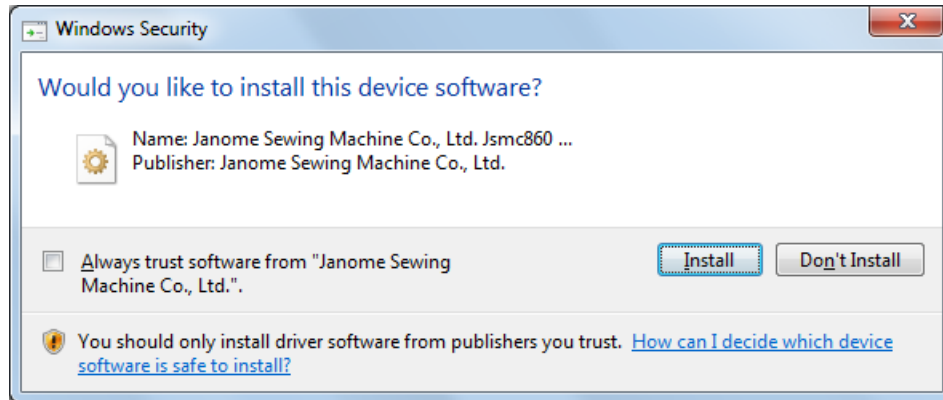


6. During installation, a **Windows Security** message will appear.

→ Select **Install this driver software anyway**.



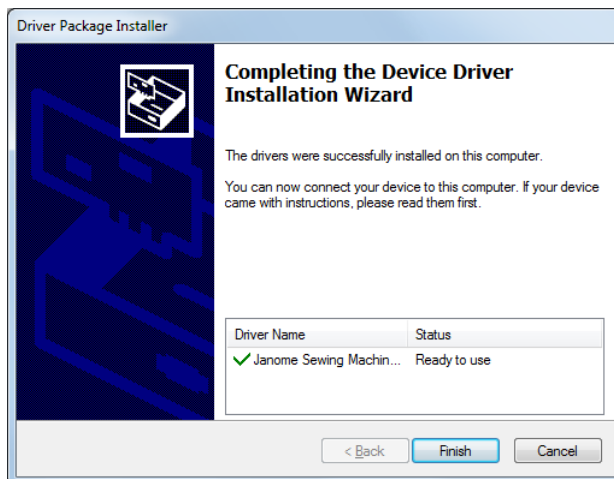
•On 64-bit systems, the following message will be displayed.



→ Select **Install**.

7. The installation complete window will be displayed.

→ Click **Finish** to close the dialog.



8. Connect the sewing machine to the computer with the USB cable and turn the power switch of the sewing machine ON.

9. The computer will automatically begin searching for the driver...



10. ...and install the driver.

